



Barbara Richter <barbara@nhacc.org>

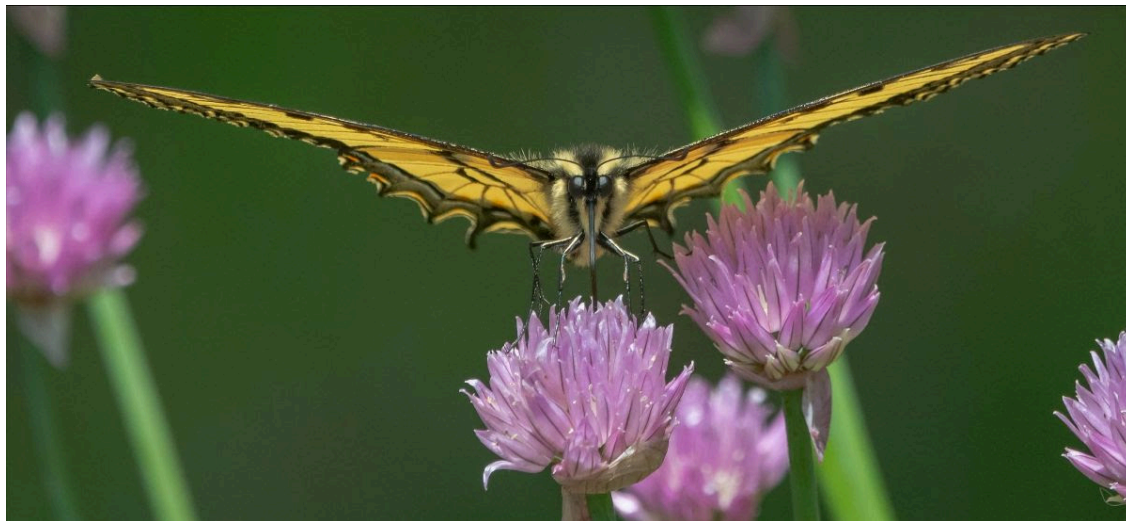
## NHACC June 2024 Enews

1 message

NHACC <barbara@nhacc.org>  
Reply-To: NHACC <barbara@nhacc.org>  
To: barbara@nhacc.org

Wed, Jun 19, 2024 at 1:01 PM

Conservation Commission Activities, Grant Opportunities, Updates and more!



### Celebrate Pollinator Week

Photo by Kelley Piccinini

Pollinator week is a time to support pollinator health and raise awareness of the importance of pollinators and how to protect them. Celebrate with your community at a local event or by participating in an iNaturalist project. Cheshire County Conservation District will host Pollinator Palooza on Tuesday, June 25, from 11 a.m.–2 p.m. at Ashuelot Park in Keene. NH Butterfly Monitoring Network has a project on [iNaturalist](#). To learn more about the importance of pollinators go to the [NH Natural Resource Conservation Service](#) website.

## Enter the NHACC Photo Contest to win \$250

### It is time to get outside and take photos

Do you love to take photos while you are out enjoying nature? If you like to capture nature's beauty, please share your amazing photos with NHACC as part of our "This is Worth Protecting" photo contest. We are primarily looking for photographs that **inspire the preservation of our natural environment**. You are encouraged to take photographs on conserved lands in or near your town, but they also may be made in other places such as your own backyard. All photos must be taken in NH. A complete list of rules can be found on the [NHACC website](#).

### Entry form is now open, and will close on September 20, 2024.

We use an on-line platform called ArtCall to host entries into the contest. Submit your photos [HERE](#). The entry form will be open until the end of the day on September 20. Contestants will be able to edit or change their entry any time before midnight on September 20. We created a new category this year; Cell phone photos. Start taking your cameras and phones outside and use them to document and celebrate our natural environments.

### Help NHACC Spread the Word

We encourage our member commissions to spread the word and invite community members to participate in the contest. Local Conservation Commissions are challenged to encourage their residents to submit photos, and be the town with the most entries. The NH town with the most submissions will receive a free ticket to the NHACC conference to invite anyone they wish, plus have the ability to use the visual content in their own social media and on town websites.

CCs in the News

The **East Kingston Conservation Commission** recently held a "Paddle the Powwow" for town residents. The group took a leisurely paddle down the Powwow Pond to the Tricking Falls Dam. The Powwow Pond has plenty of open water to enjoy; and they noticed a lot of aquatic plant growth for this early in the season -- a reminder to clean our boats of potential invasive hitchhikers before entering another body of water. The group viewed the impact milfoil and other species are having in some of the areas we visited. On our trip, they identified "waterwheel," a plant that is "non-native" to our state, and notified the New Hampshire Department of Environmental Services.

These issues are common to many of our lakes, yet the Powwow is still a beautiful body of water and a wonderful resource in Kingston and Newton for boating, fishing, swimming and wildlife watching.

*Article written by Gordon Powers, Conservation Commissioner.*

Boaters get a look at the impact of invasive plants



Members of the East Kingston Conservation Commission and town residents joined Brea Arvidson, Director of Programs, NH LAKES organization, for an informative paddle on Powwow Pond.

Paddle on the Powwow

By Gordon Powers

East Kingston Conservation Commission

EAST KINGSTON — EAST Kingston Conservation Commission recently held a "Paddle on the Powwow" for town residents.

The weather was perfect and attendance was great, especially as this was Memorial Day weekend. We took a leisurely paddle down the Powwow Pond to the Tricking Falls Dam and then back up the southern edge and into several of the coves.

The Powwow Pond has plenty of open water to enjoy; however, we did notice a lot of aquatic plant growth for this early in the season — a reminder to us all to clean our boats of potential invasive hitchhikers before entering another body of water.



Paul Dearborn, left, Powwow Pond Council, and Brea Arvidson, Director of Programs, NH LAKES organization.

We were fortunate to have Brea Arvidson (Director of Programs, NH LAKES) and Paul Dearborn (Powwow Pond Council) join our

We saw the impact milfoil and other species archiving in some of the areas we visited. On our trip Brea identified "waterwheel," a plant that is "non-native" to our state, and notified the New Hampshire Department of Environmental Services.

These issues are common to many of our lakes, the Powwow is still a beautiful body of water and a wonderful resource in Kingston and Newton for boating, fishing, swimming and wildlife watching.

Watch for announcements of paddle events later this summer. For more information about the Powwow and other New Hampshire lakes, please also visit powwowpond.org and nh.lakes.org.

For more information on the East Kingston Conservation Commission, visit eastkingston.org/conservation-commission.

Jaffrey Conservation Commission Completes Land Conservation

Thanks to the foresight of the Town of Jaffrey in New Hampshire, residents and visitors alike will have a wild park for "instruction and recreation" forever. Children's Woods & Carey Park, with a combined 142 acres, are now protected with a forever-wild conservation easement donated by the Town of Jaffrey and held by the Northeast Wilderness Trust (NEWT). [READ More](#)

Grant Opportunities

The Merrimack Conservation Partnership (MCP) 2024 grant programs

Land Conservation Grant Program, which funds transaction-related expenses on land conservation projects in the lower Merrimack Valley watershed of southern New Hampshire and northern Massachusetts. The program underwrites transaction costs—appraisals, surveys, title research, staff time, etc.—on conservation transactions that protect land identified as a priority in the Merrimack Valley Regional Conservation Plan (2014). Funds can be used for activities such as youth or public environmental educational activities, development of outreach and educational materials, river clean ups, water quality testing and monitoring activities, and other related activities. The MCP has \$25,000 to re-grant in 2024 for this grant program. The grant programs are privately funded and administered by the Society for the Protection of New Hampshire Forests on behalf of the Merrimack Conservation Partnership. Non-profit land trusts, municipalities, and state agencies are all eligible to apply for an MCP grant. Before applying for an MCP grant, applicants should carefully review the request for proposals and application materials on the "Grants" section of the [MCP website](#). Projects must be located in the towns listed on the website to be eligible to apply for funding. For all questions regarding

the grant program and the application process, please contact Brian Hotz at (603) 224-9945 x 316 or [bhotz@forestsociety.org](mailto:bhotz@forestsociety.org).

### **The New England Grassroots Environment Fund**

The Grassroots Fund has a mission to energize and nurture long-term civic engagement in local initiatives that create and maintain healthy, just, safe and environmentally sustainable communities throughout the six New England states. With a focus on those who have often been marginalized, Grassroots Fund empowers individuals, groups and organizations working across a broad range of environmental and social justice issues. By helping them identify, select and access the specific tools, resources and connections they need to challenge existing systems, they are able to develop lasting solutions to the complex problems affecting the places they live and the health of the people who live there. [Learn more.](#)

### **Access Fund's Climbing Conservation Grant**

The Access Fund's Climbing Conservation Grant Program supports projects that preserve or enhance climbing opportunities and conserve the climbing environment throughout the United States. The focus is on projects that demonstrate local climber support, collaboration with land managers, and a commitment to long-term change. Requests are accepted from local climbing groups, governmental agencies, conservation organizations, and land trusts, as well as individuals who wish to sponsor a local project. Most grants are in the range of \$1,000 to \$4,000. Requests are reviewed two times per year; the upcoming application deadline is August 1, 2024. Visit the Access Fund's website to review the grant guidelines and download the application form.

## Dues

Thank you to the 188 commissions that have paid 2024 Dues! We really appreciate your continued support for the work of NHACC and we look forward to working with our members throughout the year. As a member you can take advantage of our benefits. Not only do we send out a monthly Enews, you can find recording of our lunch & learn programs and our wetlands training series on our [YouTube channel](#), or join the NHACC listserv at [NHACC Exchange](#).

If your commission is unsure of your membership status, please email NHACC at [admin@NHACC.org](mailto:admin@NHACC.org).

## Training & Education Opportunities

### **Wildlife Gaits & Track Patterns Workshop**

July 10, 8:30 am to 2:30 pm

Odiorne Point Boat Launch, Rye

Gaits & track pattern interpretation contribute a great deal to the identification of wildlife species when clear tracks are not available. Learn to distinguish track patterns, interpret animal gaits, and understand wildlife locomotion. Daniel Hansche (of [Spur Wander](#) and [Tracker Certification](#)) will bring a bounty of tips, tricks, and creative approaches to this often over-complicated topic. This workshop is intended to simplify our approach and make this topic more accessible while keeping the richness and beauty of the process of puzzling over the stories we find in animal trails. All experience levels are welcome. [For more information.](#)

### **Grasses for Beginners UNH Professional Training**

**July 15, 9 am to 3:30 pm**  
**230 Commerce Way, Portsmouth**

This course will provide an introduction to the grasses (Family Poaceae) of New England. Participants of all experience levels are encouraged to attend. A combination of indoor and outdoor instruction will be used to familiarize participants with this challenging group. Instruction will focus on understanding and recognizing the unique morphology of the grasses, basic technical terminology, and identifying some common New England genera and species in the field. Strategies and suggestions for identification within some of the more difficult genera will be discussed. [For more info.](#)

Visit our Website

[NHACC.org](http://NHACC.org)

Our mailing address is:

[54 Portsmouth Street, Concord, NH 03301](#)

[unsubscribe from this list](#) [update subscription preferences](#)

